

SPORTS | LEISURE

Regupol®

# Multipurpose Game Courts

Competition · Training ·  
Leisure

The right Surface  
for every Sport



**BSW**

[www.berleburger.de](http://www.berleburger.de)

# Competition · Training · Leisure

## The right Surface for every Sport

A sports surface is required to meet the individual requirements for every kind of activity. Force reduction, ball reflection and slip resistance are only a few of many critical characteristics that a modern sports surface is expected to meet according to the relevant

standards. BSW has been offering Regupol® sports surfaces for decades and has been providing tailor-made solutions for all athletes and all levels of training and competition. The large range of different surfacing systems, elastic layers and methods of installa-

tion make such individual solutions possible without increasing the budget considerably. We offer a great level of flexibility – from planning, through the actual installation, to servicing the customer on a professional basis.

## The Benefits of the BSW Sports Surfaces

- sound and shock absorbent
- excellent force reduction and ball rebound
- consistent system thickness for controlled performance
- outstanding slip resistance
- minimised risk of injuries
- spike resistant
- resistant to ageing and deformation
- water permeable and/or impermeable
- best possible conditions for top class athletes
- permanent quality monitoring during production and installation
- different methods of installation
- weather resistant, UV resistant
- seamless and uniform surface texture
- numerous colour options
- long lasting even under heavy use

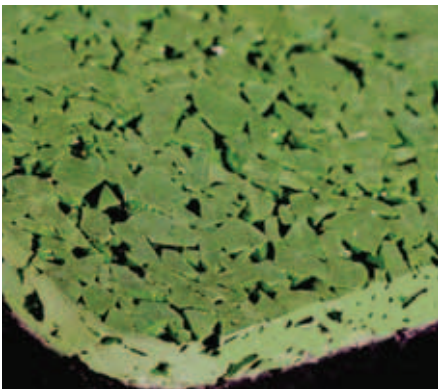




Our range of Regupol® sports surfaces includes five different system concepts. Whether for basketball, handball, tennis, volleyball, football, multipurpose courts, school yards or playing areas – the multitude of surfaces, elastic layers

and methods of installation offers the right quality in every situation. Four Regupol® Systems – Regupol AF, Regupol PD, Regupol Kombi and Kombi IS – consist of an elastic base-mat combined with different types

of wear layers. Regupol EPDM and EPDM IS are single layer, through coloured systems consisting of a solid layer of EPDM granules which are laid on the substrate in the required thickness.



### Regupol Kombi

The prefabricated sports surface featuring a great level of safety and abrasion resistance. The wear layer consists of EPDM granules which are highly compressed. This concept guarantees slip resistance and abrasion resistance in combination with a cushioning elastic layer. The thicknesses of the wear layer and the elastic layer can be adjusted to specific requirements. The minimised need for maintenance and cleaning makes Regupol Kombi the ideal sports surface for ball games and other playing activities.



### Regupol Kombi IS

The insitu version of the Regupol Kombi sports surface is the solution when a completely seamless system with a high level of force reduction is required. Regupol Kombi IS consists of black granules which are mixed with PUR binder on site and installed in the required thickness. The surface texture of the EPDM wear layer is similar to that of the prefabricated Regupol Kombi. Due to the fact that it is "paved-in-place" on site the Regupol KOMBI IS provides an excellent fit to specific site conditions.



# MULTIPURPOSE GAME COURTS



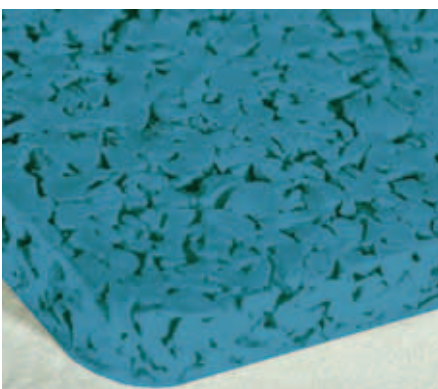
## Regupol PD / PD IS

The seamless system with a structural spray coating for multipurpose courts as well as athletic tracks. The prefabricated or insitu-type basemat is spray-coated with a special PUR/EPDM compound. This concept results in a special surface texture, highly slip resistant even under wet conditions. Regupol PD and PD IS are a cost effective alternatives with little need for maintenance, yet they offer excellent physical properties. When installed insitu, the system remains water permeable.



## Regupol AF / AF IS

The sports surface for every level of expectation – from professional to institutional events. The wearing surface consists of an impermeable layer of self levelling PUR with fine, broadcast EPDM granules to achieve a special surface texture. The basemat is prefabricated and supplied in rolls which are fully bonded to the substrate. Slip resistance and traction are the features of this system, too.



## Regupol EPDM / EPDM IS

Regupol EPDM is a solid EPDM surface and consists of EPDM granules bound by means of PUR binder. The surface texture and porosity is identical to that of the Regupol Kombi / Kombi IS, however, it is single layer construction with maximum durability subject to the thickness chosen. Regupol EPDM is often preferred for indoor and outdoor tennis courts and other ball game courts because it offers an excellent ball rebound.

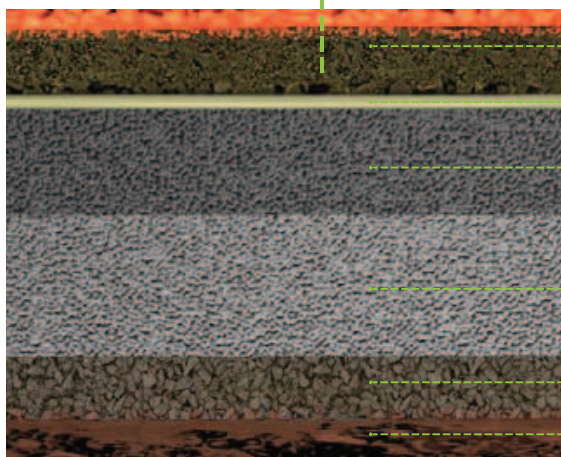


## Regupol®

Berleburger Schaumstoffwerk (BSW) manufactures a large variety of surfacing systems for sports, fitness, and leisure under the brand name Regupol®. Regupol® is a material compounded from rubber and polyurethane. BSW processes the product in its own manufacturing sites to

meet specific requirements using a number of different formulations. Regupol® products are versatile, durable, strong and completely recyclable. Customised production, finishing and warehousing provide the customer with rapid solutions for every individual requirement.

## Construction Example



Regupol® wear layer with elastic layer made out of prefabricated Regupol® material or granulate.

PUR Adhesive

Hot bituminous asphalt, thickness 20-35 mm

Hot bituminous asphalt, minimum thickness 40-50 mm

Gravel bed

Natural base / Drainage

## Installation

A two-layer hot-bituminous asphalt construction is installed on top of the unbound gravel base. With the exception of the IS-systems, a 2-component PUR Adhesive is applied to fully bond the prefabricated Regupol material

to the asphalt. The joints between the individual rolls and the joints along the outside perimeter along the kerbing may be filled a special PUR compound which, once fully cured, can be cut back to create a seamless and smooth

transition. This procedure results in a cosmetically beautiful and homogeneous playing surface with consistent physical properties such as force reduction, ball rebound, traction and abrasion resistance.

## Our Service

All Regupol® sports surfaces are available in a number of different thicknesses according to the individual requirements of a sports facility. In order to find out the appropriate thickness and surfacing option for your needs our technical staff is always ready for assisting you. The

installation of a Regupol® sports surface obviously includes the lining and surveying of a court or a field. The lines on a Regupol® surface last for a long time and may not need to be renewed for several years. The portfolio of sports surfaces is complemented by a wide range of sports

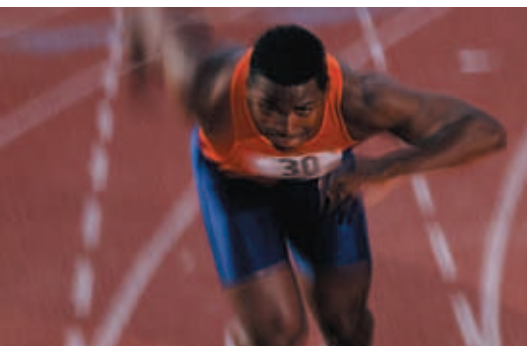
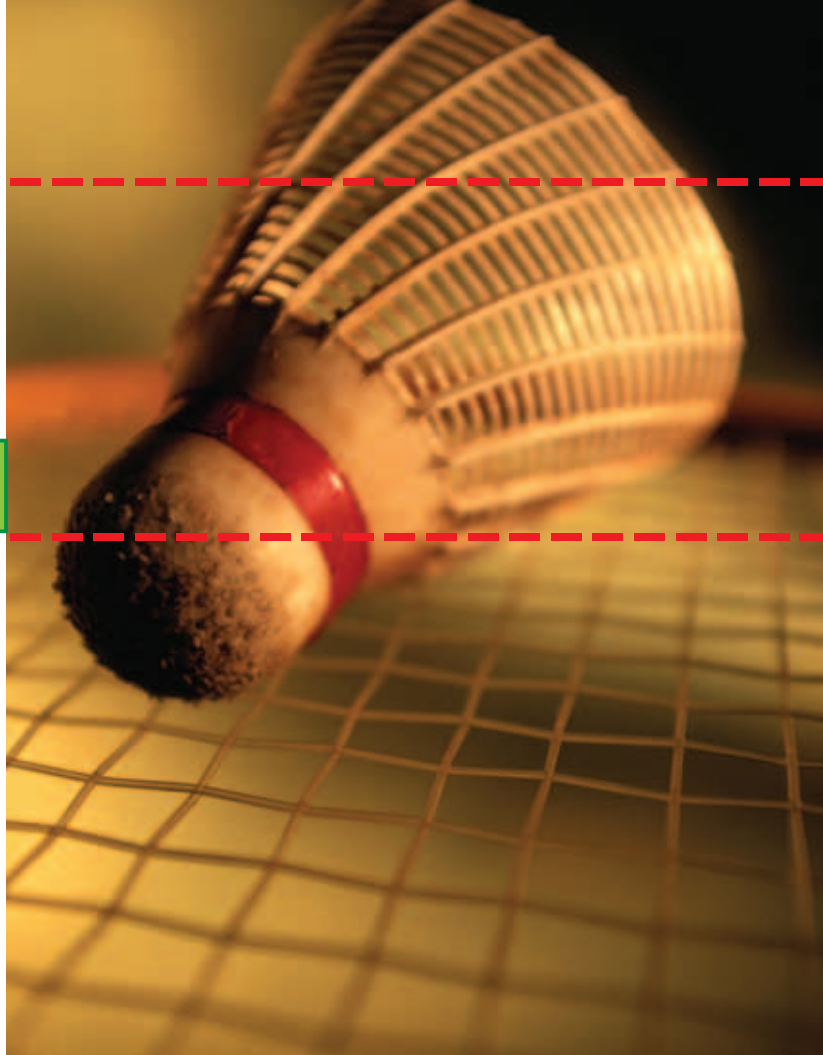
equipment and accessories. From the initial idea, to the planning stage, through to the completion of an installation, our technical sales people and our engineers are there to assist. All our installation are typically carried out under supervision of trained and certified technicians.







Regupol®



**The BSW range also includes:  
Regupol® athletic tracks**

The complete range for track and field. BSW offers the world's largest range of different installation technologies and system options – from surfaces for professional and international competition, to those for training and leisure. BSW always offers the right solution, for every kind of requirement. Regupol® tracks from BSW have been installed worldwide, in many famous sports stadiums. Many prestigious venues for international and regional competition have been held on Regupol® tracks – in many cases hundredths of seconds were critical for the final results of the races. The quality of the Regupol® surface is often the essential factor for the best performances.

For over 30 years BSW GmbH (Berleburger Foam Works) has been manufacturing and installing Regupol® sports surfaces around the world. Apart from the Regupol® sports surfaces and the range of comprehensive products for sports facilities BSW offers an equally large range of products for the construction industry. BSW is also a leader in this market with the Regupol products for technical applications. Regupol® is a registered brand of BSW. Regupol® is manufactured and promoted by BSW GmbH in Germany and by Regupol Australia GmbH.

**[www.berleburger.de](http://www.berleburger.de)**

Further information on our sports surfacing portfolio and other products can be found on our website. You can also order product samples on-line, see a list of references and contact us directly through our website.



Certified according to  
DIN EN ISO 9001  
DIN EN ISO 14001  
OHSAS 18001

**BSW**  
Berleburger Schaumstoffwerk GmbH  
Postfach 1180  
57301 Bad Berleburg (Germany)  
Telephone +49 2751 803-0  
Telefax +49 2751 803-109  
E-Mail [info@berleburger.de](mailto:info@berleburger.de)  
Internet [www.berleburger.de](http://www.berleburger.de)



**Made in  
Germany**

Manufactured in accordance  
with highest industrial  
standards. Award winning  
manufacturing process.